



# REPORT TO THE COMMUNITY

2020



## MESSAGE FROM OUR CEO

The Foundation for Community Health (FCH) began **2020** with a plan! A plan to assess where we were and how we could be more effective in our future work. While we had already taken steps to expand our internal capacities with the hiring of new program staff, increasing our social media presence, and initiating an online grant application platform, we were eager to engage in a process to create a new strategic framework for our work.

Just as we began the process, the country shut down in response to the COVID-19 pandemic. Quickly adapting to the new “Zoom” environment, our planning process forged ahead. The full Board and staff engaged in a series of active learning opportunities that included presentations, readings, and group exercises. We reviewed FCH and our communities’ strengths and challenges and studied emerging approaches and practices in philanthropy.

Continued

One practice that resonated with FCH's historical approach to building relationships was Trust-Based Philanthropy. TBP principles are based on the belief that nonprofits can be more effective in meeting their missions when they have access to flexible and reliable funding, aren't drowning in paperwork, and feel like they can trust funders to listen to what they really need to do their work. Our COVID-19 Rapid Response grantmaking demonstrated that responsive and mostly unrestricted funding enabled organizations to better respond to the needs of their constituents.

Our strategic planning process was also influenced by the growing consciousness of the deep racial inequities in American society. We joined with those calling racism a public health crisis, citing the longstanding and persistent health inequities rooted in our society's structural racism and furthered by the COVID 19 pandemic. The convergence of these public health crises galvanized FCH, creating a sense of urgency to translate our new plan into action.

Ultimately, we determined that FCH could be more effective by pursuing opportunities that improve underlying living conditions that influence health. In alignment with our new vision, we will be more intentional in applying an equity lens to all our work, processes, and operations.

Our new strategic framework is presented in this report. It an expression of our vision and the focus of the foundation's efforts. While some of this plan represents an evolution of our long-standing work, there's a good deal that will be entirely new to us. As a result, there will be lots to learn and share. ***We are excited for you to join us on this journey!***

## When a plan comes together

In 2020, FCH began a strategic planning process for the foundation with the purpose of creating a framework that will guide the foundation's work. In early 2021, FCH's Board of Directors approved the following strategic framework for the foundation, placing community at the center of health, well-being, and equity. A full summary of our strategies and planning process can be found here: [bit.ly/FCHStrategicPlan](https://bit.ly/FCHStrategicPlan)

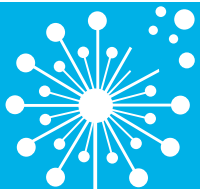
### MISSION

We work together with people and organizations to improve the health and well-being of residents in our community, especially those that have historically been under-resourced.

### VISION

All aspects of our community support the conditions required for health, well-being, and equity.

## OUR PRIORITIES



### SUPPORT LOCAL DECISION MAKING

- Strengthen engagement between decision-makers and those most impacted by policy decisions
- Make community health needs information accessible and actionable for local decision-makers
- Support planning, pilot, and demonstration projects of our municipalities that are participatory and consider the social determinants of health



### IMPROVE COMMUNITY ASSETS

- Leverage existing community assets, such as schools and libraries, to advance health access and well-being
- Invest in local infrastructure needs related to broadband, food, and housing
- Support school-based oral health and rural transportation operational resiliency and effectiveness



### STRENGTHEN ORGANIZATIONS

- Build resiliency and effectiveness of nonprofit organizations
- Support nonprofit organizational health
- Create opportunities for leadership development
- Seed pilot initiatives of bidirectional collaborative efforts

## Bringing Primary Care to Northwest Connecticut: Community Health & Wellness Joins the North Canaan Community

In northwest Connecticut, community members face a variety of barriers to accessing health care, including a small number of providers, lack of specialty care, long distance to travel, and lack of primary care. In the summer of 2019, FCH awarded a \$1.3M grant to Community Health & Wellness Center of Greater Torrington, an award winning Federally Qualified Health Center providing services in Torrington and Winsted, to establish a health center in North Canaan, CT. Key activities to date have included purchasing the property on East Main Street in North Canaan, completing surveys and assessments of the property, and securing an architect for the project. The project is now proceeding with demolition, clearing existing structures on the property to build a 7,300 square foot, two story building. Services will include comprehensive and continuous primary care, behavioral health, walk-in non-emergency medical services for minor illness and injuries, and chiropractic care.



## FCH Responds to the COVID-19 Pandemic

In 2020, over 20% of our grants were in the form of COVID-19 rapid response grants, to support our community's safety net and critical human services. In addition to these grants, the foundation also released restrictions with existing grants and partnered with two funder collaboratives to strengthen philanthropy's response in northwest Connecticut and the greater Hudson Valley.

### Over \$230,000 Distributed to Our Communities\*



\*Total represented includes grants made to nonprofit organizations and charitable expenses paid to for-profits. These expenses included the purchasing of fabric to make masks and personal protective equipment (PPE) for local health providers.



## Expanding Health Access: Webutuck Central School District's School-Based Health Center

In 2020, FCH partnered with the Webutuck Central School District, supporting their efforts to establish a school-based health center with Open Door, a Federally Qualified Health Center. FCH's \$100,000 grant enabled the school district to renovate existing space on their campus, meeting the space requirements of a comprehensive school-based health center. **Schools are well placed to address health disparities – school-based health centers have been found to remove financial, privacy, and transportation related barriers that can be experienced and are often exacerbated in a rural region like ours.** Webutuck's School-Based Health Center will open during the 2021-2022 school year and provide comprehensive care to the nearly 700 students in the school district.

## Better Together: Litchfield County Opiate Task Force strengthens ties between and amongst behavioral health providers in northwest Connecticut

Through a total investment of \$228,000 across the last three years (2018-2020), FCH supported the increased capacity of the Litchfield County Opiate Task Force through the employment of a full-time Network Coordinator, who worked closely with the task force's Executive Committee to establish and implement programmatic priorities of the multi-agency effort. **Concerted collaborative efforts need infrastructure, to thrive, take shape, and deepen connections – in Litchfield County this has also meant better care for residents through improved coordination of services between agencies, across the continuum of recovery and in acute emergencies.** The task force recently secured \$1M in federal funding to expand and deepen their work in Litchfield County.

## Financials

### FINANCIAL POSITION

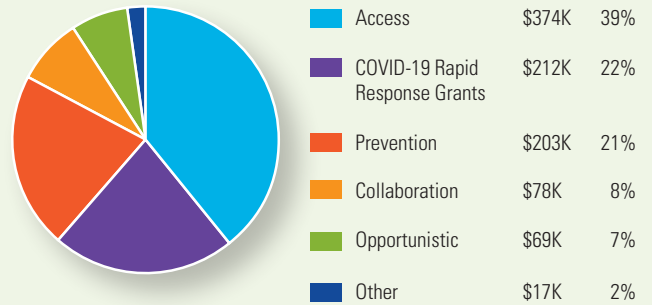
ASSETS	December 31, 2020 (audited)	December 31, 2019 (audited)
Total Assets	\$ 38,312,716	\$ 35,458,798
FCH Owned Assets	26,926,426	24,940,138
External Trusts*	8,651,503	7,953,004
Donor Advised Funds**	2,734,787	2,565,656
Grants Awarded	954,329	2,081,016
Program Expenses	449,281	429,486
Administration Expenses	208,889	191,026

\*FCH receives annual distributions from these funds.

\*\* FCH has two donor advised funds with the Community Foundations of the Hudson Valley and Northwest Connecticut Community Foundation.

### GRANTS

In 2020, we distributed over **\$950K** in grant funds to **42** organizations.



## Board and Staff



Departing members of FCH's Board of Directors, **Dr. Eugene Chin** and **Evelyn Garzetta** at our June 2021 annual meeting. Thank you Gene and Evelyn for your service!

### Board of Directors

Robert Kuhbach, *Chair*  
Miriam Tannen, *Vice-chair*  
Thomas Quinn, *Treasurer*  
Karren Garrity, *Secretary*

Ceely Ackerman  
Christian Allyn  
Lara Hanson Barrett

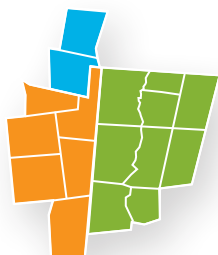
Katty Brennan  
Dr. John Charde  
Dr. John William Gallup  
Dr. Joshua Ginsberg  
Edith Greenwood  
Felicia Jones  
Hila Richardson  
Rev. AJ Stack  
Dr. Mustafa Ugurlu  
Jane Waters

### Staff

Cathy Glasner, *Office & Grants Manager*  
Nancy Heaton, *Chief Executive Officer*  
Gertrude O'Sullivan, *Director of Communications & Special Programs*  
Natashea Winters, *Senior Program & Evaluation Officer*

## Our Community

The Foundation for Community Health serves a small region where northwest Connecticut and the greater Harlem Valley meet. Over **52,000** people call this region home. Since 2003, we have invested over **\$17 million** to improve the health and well-being of our community.



**Columbia County, New York**

**Litchfield County, Connecticut**

**Dutchess County, New York**

The Foundation for Community Health (FCH) is a private, non-profit philanthropy dedicated to improving the health and well-being of people living in the northern Litchfield Hills of Connecticut and the greater Harlem Valley of New York, through grantmaking, advocacy, and community leadership. FCH was initially funded from the net assets of the sale and conversion of Sharon Hospital in 2003 and is a supporting organization of the Berkshire Taconic Community Foundation, Community Foundations of the Hudson Valley, and Northwest Connecticut Community Foundation.



478 Cornwall Bridge Rd Sharon, CT 06069  
Phone: (860) 364-5157  
Fax: (860) 364-6097  
[www.fchealth.org](http://www.fchealth.org)