

Foundation for Community Health unveils its new space

By Shaw Israel Izikson

SHARON — The Foundation for Community Health officially celebrated its move to a bigger office at 155 Sharon Valley Road with an open house on Wednesday, Oct. 7.

The nonprofit charitable organization serves residents of Litchfield, Dutchess and Columbia counties and helps fund charitable health programs and projects.

It was founded in 2003 after the sale of Sharon Hospital to Essent Healthcare with support from the Berkshire Taconic Community Foundation.

For six years, the organization operated in a two-room space on Upper Main Street in Sharon.

The organization moved out of its cramped quarters in April and into a spacious two-floor house that was built sometime in the 1800s.

“Now we have office space for nonprofits to use and space to hold seminars and educational programs,” Executive Director Nancy Heaton said. “Right now, we have four office spaces upstairs. Two of those spaces are free and can be used by nonprofits in the three communities that we serve. We also have a meeting

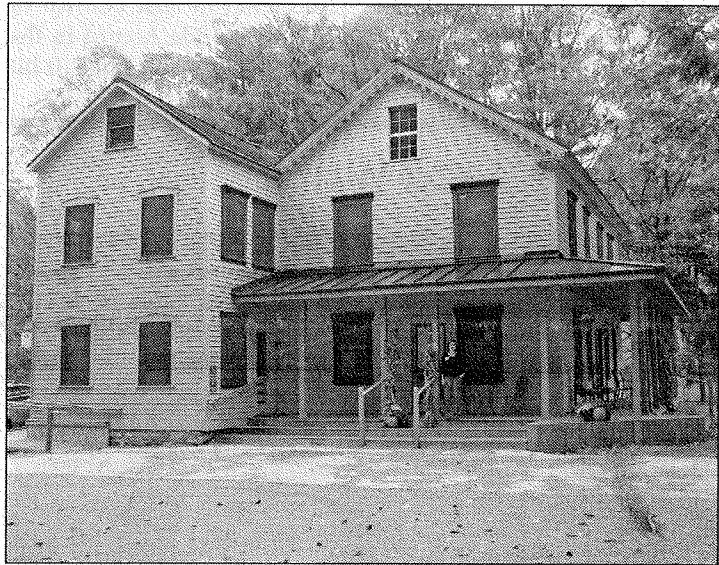


PHOTO BY SHAW ISRAEL IZIKSON

More elbow room: Executive Director Nancy Heaton, outside the Foundation for Community Health's new office at 155 Sharon Valley Road.

room in the house that can hold up to 35 people for any classes or meetings.”

Heaton said the new space is a blessing.

“It's very hard for nonprofit organizations to find space,” she said. “Even harder considering that we're in a rural area.”

Grants Manager Heidi Kearns said the location is also excellent. It's close to Sharon Hospital and close to the New York border.

Over the past year, the foundation provided almost \$800,000 to local health organizations.

“Our mission is to improve the health and well being of residents in our service area,” Heaton said. “And now we can provide space for community organizations that might need it.”

For more information about the Foundation for Community Health call 860-364-5157 or visit their Web site at fchealth.org.